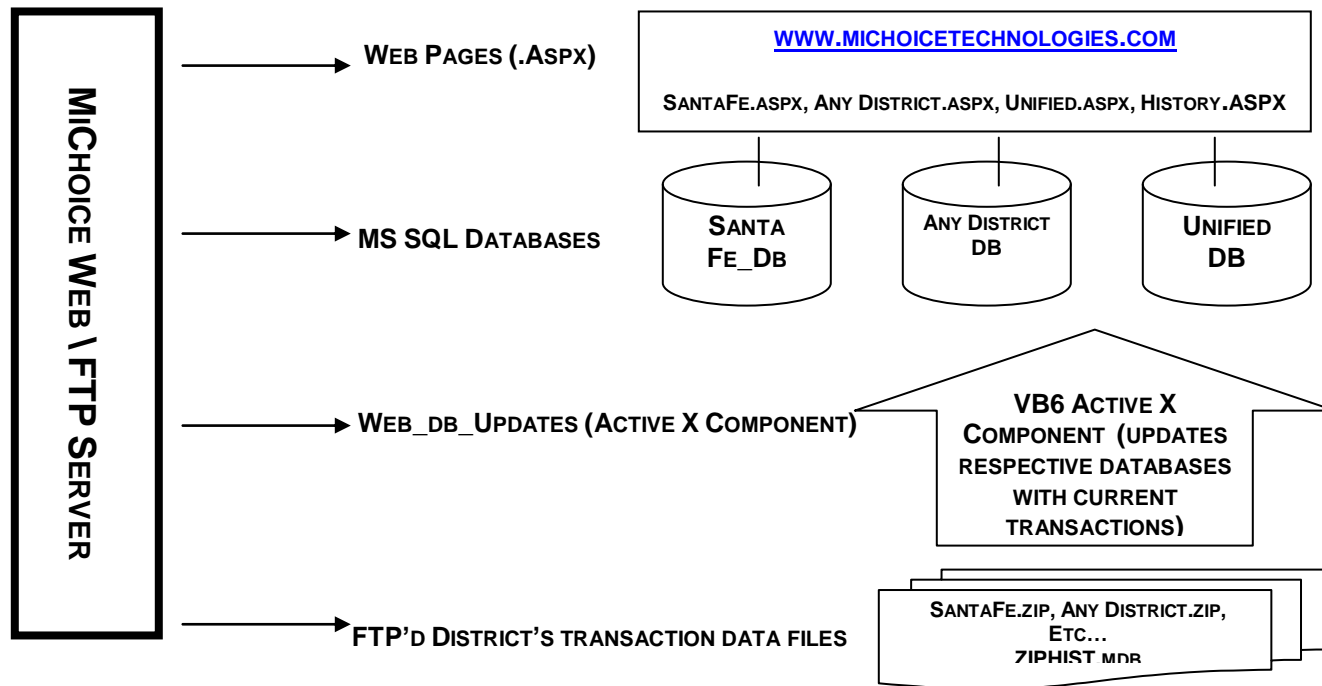


MEAL HISTORY DATA FLOW – FROM LINE TO ON-LINE

WEB SERVER:
216.139.235.118



NOTES REGARDING WEB SERVER SETUP:

WEB SERVER IP: 216.139.235.118

THE WEB SITE IS AN ASP.NET 2.0 SERVICE. CHANGES TO THE SITE CAN BE MADE ON THE SERVER AND THEN PUBLISHED TO THE LOCAL BOX FOR DISPLAY. (E:\ONLINE_ACCOUNT_SITE) WHEN PUBLISHING IT, IT SHOULD BE PUBLISHED TO (E:\COMPILEDSITE).

UPON THE ENROLLMENT OF A NEW DISTRICT, A NEW SPECIFIC PAGE FOR THAT DISTRICT SHOULD BE CREATED AND NAMED ACCORDING TO THE DISTRICTS NAME. (E.I. SANTA FE.ASPX, UNIFIED.ASPX, ECT...) A COPY OF THE DEFAULT.ASPX PAGE CAN BE USED TO BEGIN THIS PAGE CREATION.

THE INSTANCE OF MSSQL RUNNING ON THE SERVER HOUSES A SEPARATE DATABASE FOR EACH DISTRICT. ITS' NAMING CONVENTION SHOULD REFLECT THE DISTRICTS NAME JUST AS THE WEB PAGE DOES. (E.I. UNIFIED_DB, ANY DISTRICT_DB, SANTFE_DB).

EACH DISTRICT'S RESPECTIVE DATABASE CONTAINS TWO TABLES:

- A. [ACCT] – THIS CONTAINS GENERAL INFORMATION ON ALL THE STUDENTS IN THE DISTRICT (NAME, GRADE, HOMEROOM, ACCOUNT BALANCE, ECT.)
- B. [ACCT HIST] – THIS TABLE CONTAINS ALL THE CORRESPONDING MEAL TRANSACTIONS THAT HAVE BEEN RECORDED FOR EACH OF THE ACCOUNT CONTAINED IN THE [ACCT] TABLE.

A DISTINCT FOLDER FOR EACH DISTRICT MUST BE CREATED ON THE SERVER. THIS FILE WILL BE WHERE THE DISTRICT WILL FTP NEW ACCOUNT AND TRANSACTION DATA UP TO WEB SERVER. THE LOCATION OF FOLDERS SHOULD BE CREATED AT: "C:\INETPUB\FTPROOT\DISTRICTS_DATA\". **THIS FOLDER HAS BEEN SETUP WITH A SPECIAL USERNAME AND PASSWORD THAT IS PROVIDED TO THE DISTRICTS SO THEY CAN GAIN ACCESS TO IT TO PUSH THE FILES UP TO THE SERVER. (THIS MUST BE UPDATED YEARLY)**

AN ACTIVE X SERVICE IS INSTALLED AND CONSTANTLY RUNNING ON THE WEB SERVER. IT IS NAMED: WEB_DB_UPDATES. THE PURPOSE FOR THIS SERVICE IS TO CONSTANTLY SURVEY THE FOLDERS SETUP ON THE SERVER FOR NEW DATA ARRIVING FROM THE DISTRICTS. WHEN A NEW FILE IS DETECTED, THIS SERVICE WILL PARSE OUT THE NEW DATA, UPDATING THE WEB DATA AND THEN DELETE THE INCOMING FILE. THIS IN TURN ALLOWS FOR THE LATEST DISTRICT DATA TO BE ACCESSED THROUGH THE WEB SITE.

OTHER THAN THE INDIVIDUAL DATABASES FOR THE DISTRICTS, ANOTHER DATABASE IS HOUSED ON THE SERVER NAMED: WEB_BAL_CUSTOMERS. THIS DATABASE IS USED TO REGISTER NEW DISTRICTS AND SET THE PATH FOR THE ACTIVE X SERVICE TO UPDATE THE DISTRICTS DATA PROPERLY. IT CONSISTS OF ONE TABLE: [CUST_DATA].

- A. [DISTRICT_DB_NAME] – NAME OF THE DISTRICTS MSSQL DATABASE
- B. [DISTRICT_FILE_PATH] – THIS IS THE PATH TO WHERE THE FILE FROM THE DISTRICT IS BEING UPLOADED.
- C. [DISTRICT_FILE_NAME] – THIS REPRESENTS THE NAME OF THE FILE BEING UPLOADED BY THE DISTRICT.
- D. [DISTRICT_ACTIVE] – THIS FIELD REPRESENTS IF THE DISTRICT IS ACTIVE OR NOT.

Data in Table 'Cust_Data' in 'WEB_BAL_CUSTOMERS' on '(local)'				
District_DB_Name	District_File_Path	District_File_Name	District_Active	
ALIEF_DB	C:\Customer_Data\WEB_DBS\	ALIEF.zip	1	
NEDERLAND_DB	C:\Customer_Data\WEB_DBS\	NEDERLAND.zip	1	
SANTAFE_DB	<NULL>	SANTAFE.zip	0	
WHITEHOUSE_DB	<NULL>	WHITEHOUSE.zip	0	
WALLER_DB	<NULL>	WALLER.zip	0	

COMSPRO WEB HISTORY SETTINGS:

A NEW EXECUTABLE PROGRAM HAS BEEN WRITTEN TO HANDLE THE COMBULATION AND TRANSFER OF HISTORY DATA FROM THE DISTRICTS MS SQL DATABASE TO THE MICOICE WEB SERVER VIA FTP. THIS NEW EXECUTABLE AND ITS' INI FILE NEED TO BE PLACED IN THE COMSPRO DIRECTORY FOR PROPER FUNCTIONALITY. THE FILES TO BE INCLUDED ARE:

- A. CPWEBLINK.EXE –THIS IS THE PROGRAM THAT CONTAINS THE CODE HANDLING THE FTP TRANSFERS
- B. WEBLINK.INI – THIS INI FILE CONTAINS SPECIFIC INFORMATION ABOUT THE DISTRICT AND IMPORTANT INFORMATION AS TO WHERE THE DATA SHOULD BE SENT. **THIS FILE CONTAINS THE USER NAME AND PASSWORD PROVIDED TO THE DISTRICT BY MICOICE TO GAIN ACCESS TO THE FTP SERVER. THE USERNAME AND PASSWORD ARE SUBJECT TO CHANGE. UPON A NEW INSTALLATION, MICOICE SHOULD BE NOTIFIED TO CONFIRM THE SETTINGS.**

WEBLINK.INI SETTINGS:

[FTP SITE]

SERVERNAME=216.139.235.118

- THIS IS THE NAME OR IP ADDRESS OF THE MICOICE WEB SERVER

USERNAME=SRM

- THIS IS THE USER NAME FOR THE FTP LOGIN PROVIDED BY MICOICE

PASSWORD=SRM3323*

- THIS IS THE PASSWORD FOR THE FTP LOGIN PROVIDED BY MICOICE

PATH=\\DISTRICTS_DATA\ALIEF

- THIS IS THE PATH TO THE DISTRICTS FOLDER ON THE FTP SITE PROVIDED BY MICOICE

FILE=ALIEF.ZIP

- THIS IS THE NAME OF THE ZIP FILE SENT TO THE FTP SITE

[PATHS]

FILENAME=ALIEF

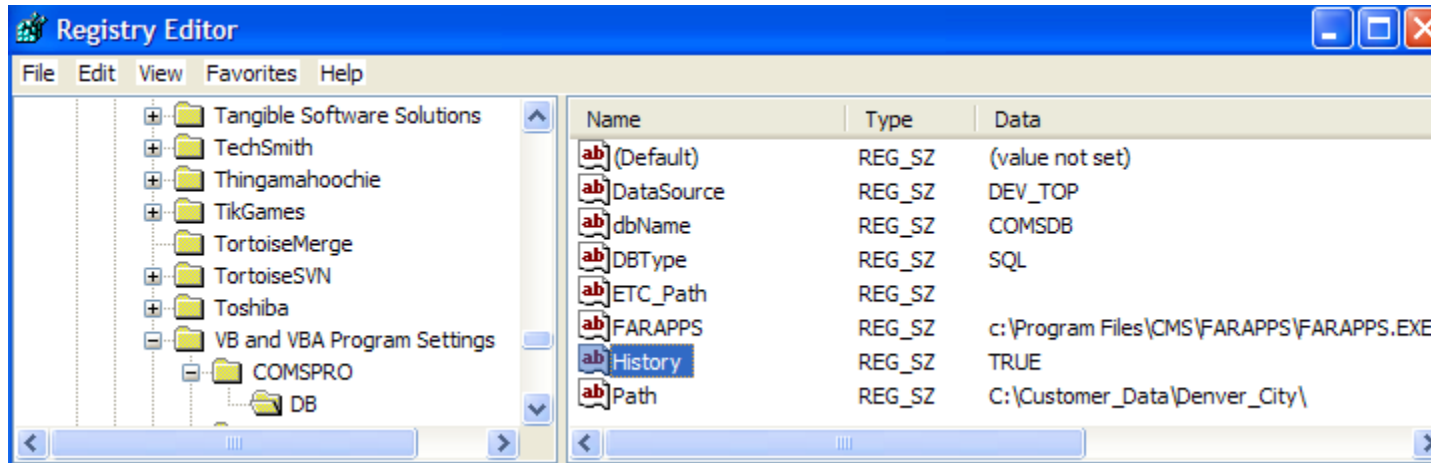
- THIS IS THE NAME OF THE FILE TO BE ZIPPED UP

COMSPRO UTILIZES A SQL SERVER DATABASE ENTITLED "COMSDB". IN ORDER TO STORE THE HISTORY DATA, A SECOND SQL DB MUST BE HOSTED ON THE LOCAL MS SQL MACHINE. IT IS ENTITLED, "COMSDB_HISTORY". IT IS DISTRIBUTED ALONG WITH THE COMSDB DATABASE UPON INSTALLATION.

IF IT DOES NOT ALREADY EXIST, A NEW FOLDER MUST BE CREATED UNDER THE COMSPRO FOLDER ENTITLED “WEB_DATA”.

THIS FOLDER SHOULD CONTAIN AN ACCESS DATABASE TITLED “ZIPHIST.MDB”. THIS IS THE TEMPLATE DATABASE THAT IS POPULATED WITH THE DISTRICTS HISTORY DATA BEFORE IT IS ZIPPED UP AND FTP’D TO THE WEB SERVER. AT THE TIME IT IS ZIPPED UP, IT IS RENAMED ACCORDING TO THE “FILENAME” SETTING IN THE WEBLINK.INI FILE.

IF IT DOES NOT ALREADY EXIST, A NEW KEY TO THE REGISTRY MUST BE ADDED TO ENABLE COMSPRO TO BEGIN HANDLING HISTORY DATA BEING TRANSFERRED TO IT FROM THE CAMPUSES. A KEY ENTITLED “HISTORY” SHOULD BE ADDED INTO THE “DB” FOLDER. ITS’ BINARY DATA SHOULD BE SET TO “TRUE”. A SETTING OF “FALSE” WILL TURN OFF THE TRANSFERING OF HISTORY TO THE WEBSERVER.



IN COMSPRO UNDER THE DATA TRANSFER OPTIONS A NEW BUTTON HAS BEEN ADDED TO ALLOW FOR THE DISTRICT’S HISTORY TO BE SENT TO THE WEB SERVER.



THIS BUTTON CAN BE USED TO DO A MANUAL PUSH UP TO THE WEB SERVER. IT IS IMPORTANT TO NOTE HOWEVER, IF THE HISTORY FUNCTION HAS BEEN ENABLED BY SETTING THE REGISTRY SETTING TO "TRUE", AT THE TIME THAT DATA IS RECEIVED FROM THE SCHOOLS BY COMSPRO, **THE HISTORY DATA WILL THEN AUTOMATICALLY BE COMBINED AND SENT TO THE WEB SERVER.**

EMEAL WEB HISTORY SETTINGS:

ACCOUNT HISTORY DATA IS NOW SENT TO COMSPRO WITH THE REST OF THE MEAL SERVICE DATA THAT IS NORMALLY SENT. NO SPECIAL SETTINGS ARE NECESSARY TO ENABLE THIS FEATURE. THE ONLY REQUIREMENT IS THAT **VERSION 22.0.2** OF THE ETRANS.EXE FILE MUST BE BEING USED.

IF SENDING THE DATA MANUALLY, HISTORY FOR THE DAYS SELECTED FROM THE DATE SELECTION BOX WILL BE SENT. IF RELYING ON THE AUTO TRANSFER FEATURE, HISTORY DATA FOR THAT DAY ONLY WILL BE SENT TO COMSPRO.